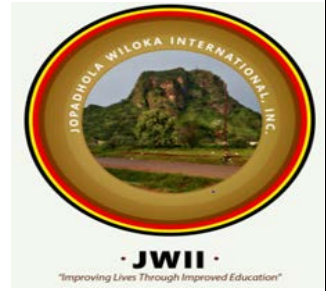


JWII Newsletter

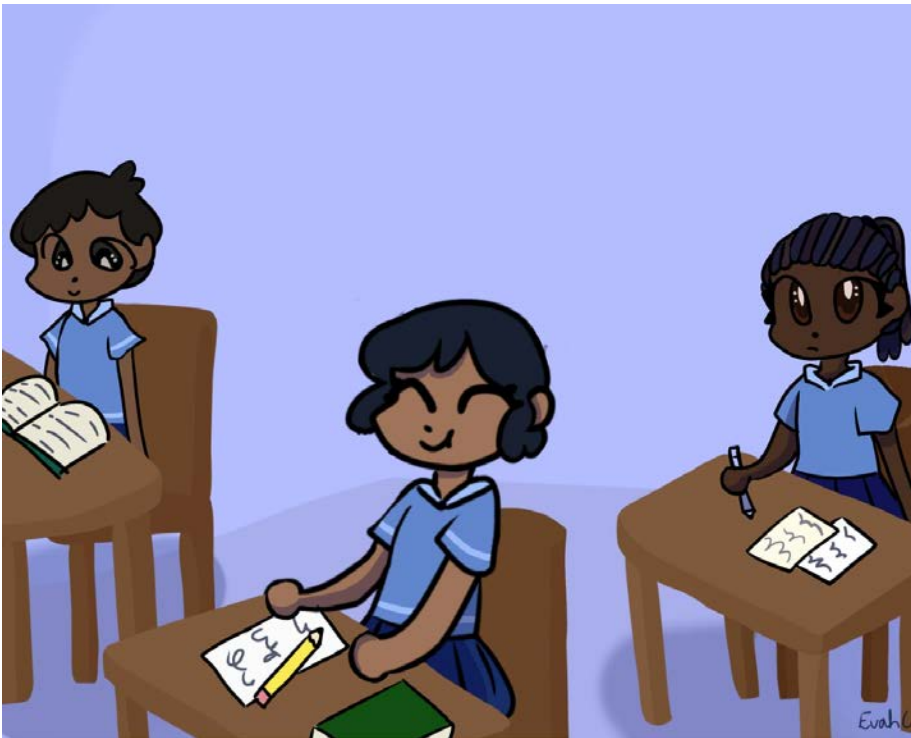


Volume 1, Issue 1

May 2021



*Early Childhood Education Center, Kidera, Tororo District, Uganda
(Currently under construction)*



In this Issue

Early Childhood Education Updates

Donations and Fundraising Endeavors

- Book Donations
- Clothing Donations
- Cash Donations
- Fundraising and Pledges

A Word from JWII

Dear Readers,

On behalf of the JWII Executives, we hope that you are all well and staying safe during the COVID-19 pandemic.

In this Newsletter, we highlight some of the activities that have taken place in the last several months. We encourage you to share this Newsletter with your family and friends. We also encourage everyone to visit our website at <https://jwii.org>, as well as our Facebook and Instagram pages.

Thank you for your continued support of the work of JWII.

Kind regards,

Communications Team

- Michael Cooper-Ochiengh
- Mary Bedeau
- Samuel Bedeau

Early Childhood Education Updates

Much progress has occurred in the Early Childhood Education Center Project in Kidera.



Update

- 1) Windows and doors have been installed.
- 2) Work is ongoing on veranda, and electrical/solar system.



Next Phase

- 1) Construction of bathrooms (toilets) for students and school administration staff.
- 2) Construction of the kitchen and dining room structure.

“Education is the most powerful weapon which you can use to change the world” – Nelson Mandela

The construction of the Early Childhood Education Center is in Kidera village in Tororo District. As mentioned in our last Issue of the JWII Newsletter, the Early Childhood Education Center in Kidera village is a collaboration between the community and JWII. JWII's long-term vision is to have numerous early childhood education centers opened throughout Padhola, Uganda.

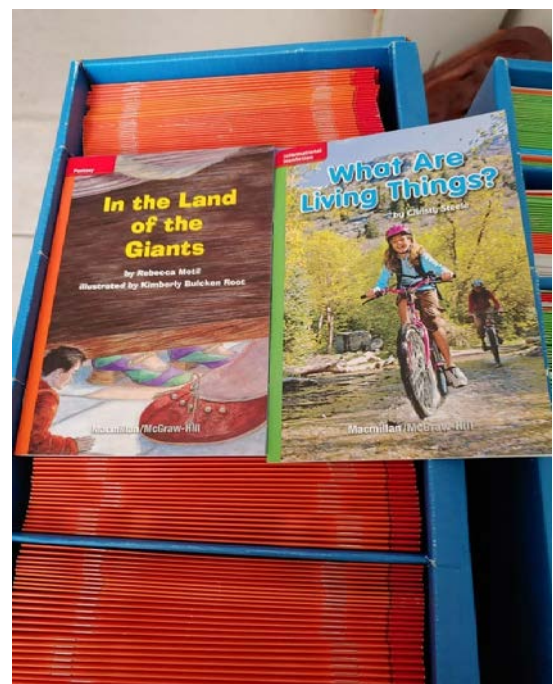
If you would like to make any donations towards any of the above, please do so on the JWII website (<https://jwii.org>).

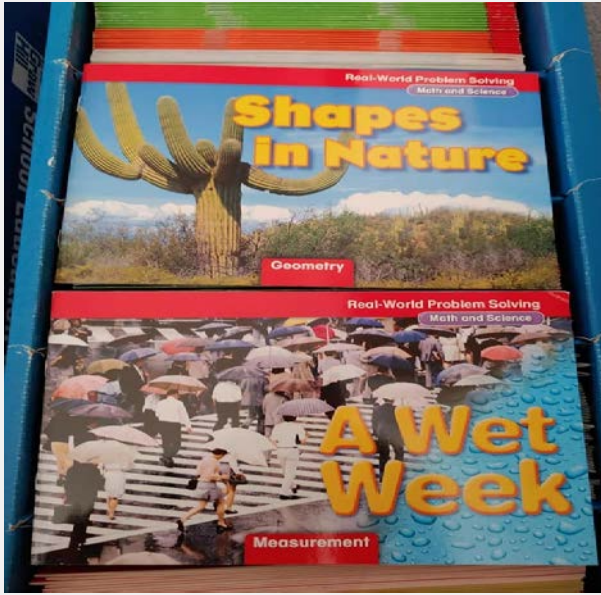
Donations and Fundraising Endeavours

On behalf of JWII, we extend our heartfelt appreciation and gratitude to JWII Executives, Members, Donors, and Friends who made contributions to JWII during our Fiscal Year 2021. We highlight some of them below.

Brooke Foyt and her husband, Howard, who generously donated US \$800.00 to JWII in September 2020. A word of special thanks goes to Brooke for supporting JWII in person over the years.

We are currently in possession of a series of graded readers, covering Grades 1 through 4. The collection stands about 12 cubic feet (2' x 2' x 3') as a gauge of its size. It is a one-off contribution brought to us by Joseph Christie, through a contact of his. We would greatly appreciate suggestions/assistance with the logistics of getting this valuable resource into the hands of children in Padhola.





Thank you to Elisabeth Okumu for her contribution to JWII. She donated US \$565.00 for the Kidera early childhood education school. The funds are to be applied towards the purchase of three teachers' desks, three teachers' office cabinets, and four doors.

A word of thanks goes to Shelia Cason Okumu for requesting her Branch Manager at South Daytona Launch Credit Union to consider making the donation of shirts to JWII.



*Dustin B. Gothard
Branch Manager, South Daytona LCU*

Donations of Shirts

South Daytona Launch Credit Union, through Mr. Dustin B. Gothard, the Branch Manager, donated to JWII over 350 shirts, which included T-Shirts, Dress Shirts, Sweatshirts, and Sweaters, among others.

Many thanks to Mr. Gothard and his colleagues at Launch Credit Union for their very generous donations of shirts. These contributions will be beneficial to some people in Padhola, Uganda.

Below are photos of a few shirts.



South Daytona Launch Credit Union donated over 350 shirts to JWII (see a few samples above).

Thank you to JWII Executives and friends who made cash contributions and made pledges throughout FY2021, in honor of their own birthdays, and their family members' and friends' birthdays. These contributions were made, to be applied towards the Kidera Early Childhood Education Project.

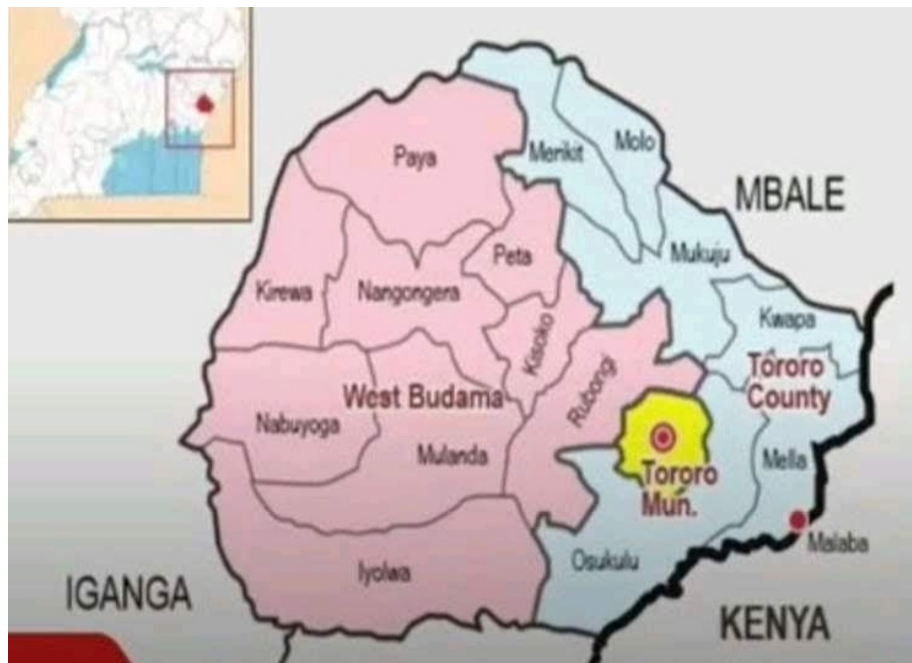
Thank you for taking the time to read our Newsletter.

Be encouraged and feel free to share a post; this can make an online campaign to have an unimaginable reach! The possibilities are endless especially today in a society where social media is at the forefront of our everyday lives. JWII can effectively spread the news about its activities through these digital avenues.

Is your birthday coming up? Please consider asking your Facebook friends/connections to gift to JWII.org instead; no amount is too small.

Stay safe during the COVID-19 pandemic and the variants.

Map of Padhola.



As you look at the map of Padhola, please share what comes to your mind. For example:

Idea 1: A major road from Malaba through Tororo town, Nagongera town, and beyond appears to run through the center of Padhola like a diameter of a circle. This road, together with the railway line running nearly parallel to it, will always be vital to easier movement of people and goods and the development of other roads that cross it.

— Paul Okumu

Idea 2: How well is your area/village represented in any of the various Padhola forums or organizations trying to develop Padhola?

— Paul Okumu

Etc., etc.



JWII Executives and Officers

President	Richard Ofwono
Vice President	Earl Christie
Vice President	Evah Ochiengh
Treasurer	Earl Christie
Assistant Treasurer	Deborah Christie
Assistant Treasurer (Oversight Responsibility only)	Anne Owere Okoth
Early Childhood Education Coordinator	Sammie Chasia
Assistant Childhood Education Coordinator	Lydia Odaga
Assistant Childhood Education Coordinator	Martha Ochieng
Secretary	Paul Okumu
Assistant Secretary	Gracie Ochieng
Assistant Secretary	Penninah Mulindwa
Communications Officer	Michael Cooper-Ochiengh
Assistant Communications Officer	Mary Bedeau
Assistant Communications Officer	Samuel Bedeau
Global Mobilization Officer	Michael Onyango
Assistant Global Mobilization Officer	Peter Osinde
Assistant Global Mobilization Officer	Lydia Odaga
Assistant Global Mobilization Officer	Patrick Opendi
Chief Fundraising Officer	Deborah Christie
Assistant Chief Fundraising Officer	Andrew Okoth
Assistant Chief Fundraising Officer	Peter Osinde
Assistant Chief Fundraising Officer	Sheila Magara

Thank You!